



Message Guidelines for Electronic Telecommunication Bill from Current Platform (Formerly called VRD)

Format:	EDIFACT
Message Type:	INVOIC
Message Status:	D
Message Release:	99B
Subset:	VETB
Subset Version:	1
Subset Release:	0
Document version:	1



Disclaimers

This document and the information contained within are provided by Verizon¹ subject to the limitations of liability and other terms of its related service agreement(s) and without warranty of any kind. Further and without limitation, Verizon and its affiliated companies disclaim all warranties, express or implied, including without limitation, warranties of fitness for a particular purpose, against infringement, or merchantability. In addition to and without limitation of any other limitation of liability of Verizon or its affiliated companies set forth in an applicable tariff or elsewhere, in no event shall Verizon or its affiliated companies, or their agents or suppliers, be liable under contract, warranty, tort, or any other legal theory, for any incidental, consequential, punitive, special or indirect damages arising from or relating to this document or its contents, even if advised of the possibility of such damages.

Confidentiality

This document and the information contained within represent proprietary information of Verizon or its affiliated companies and suppliers. No use, reproduction or disclosure is permitted except as expressly authorized in an applicable tariff of, or written agreement with, Verizon or its affiliated companies.

Trading Partner Information

Verizon bills customers for services provided by Verizon and other service providers on a monthly basis (except as otherwise agreed). There is no connection between Verizon and other, non-affiliated service providers.

Residential customer accounts should refer disputes or discrepancies to your business office/service representative or consult the Customer Rights and Responsibilities section of your local telephone book for information.

© 2018 Verizon. All Rights Reserved.

The Verizon names and logos and all other names, logos and slogans identifying Verizon's products and services are trademarks and service marks or registered trademarks and service marks of Verizon Trademark Services LLC or its affiliates in the United States and/or other countries. All other trademarks and service marks are the property of their respective owners.

¹ "Verizon" refers to the Verizon entities that provide the services to which the EDIFACT and other billing-related services addressed in this document apply.

Message Guidelines for Electronic Telecommunication Bill

1.	INTRODUCTION	5
2.	MESSAGE DIAGRAM	8
3.	SEGMENTS / SEGMENT GROUPS AND FREQUENCY	11
3.1	Branching diagram ‘HEADER SECTION’	11
3.2	Branching diagram ‘DETAIL SECTION’	12
COM	Communication contact C 5	13
3.3	Branching diagram ‘SUMMARY SECTION’	13
4.	EXPLANATION OF SEGMENTS AND DATA ELEMENTS	14
4.1	Header Section	14
4.1.1	Segment UNA – Delimiter	14
4.1.2	Segment UNB – Sender- and recipient identification	15
4.1.3	Segment UNH – Beginning of the CONTRACTOR - Invoice	17
4.1.4	Segment BGM – Type, number and status of invoice	19
4.1.5	Segment DTM – Invoice date and period	20
4.1.6	Segment FTX – Free text	21
4.1.6.1	Segment FTX – Invoice Instruction/Invoice text	21
4.1.6.2	Segment FTX – Invoice language	22
4.1.6.3	Segment FTX – Payables information	23
4.1.6.4	Segment FTX – General information	24
4.1.6.5	Segment FTX – Customer Remarks	25
4.1.6.6	Segment FTX – Tax Declaration	26
4.1.7	Segment - Group 1	27
4.1.7.1	Segment RFF – Numbers	27
4.1.7.2	Segment DTM – Authorization date	29
4.1.7.3	Segment FTX – Free Text	30
4.1.8	Segment - Group 2	31
4.1.8.1	Segment NAD – Addresses of the parties	31
4.1.8.2	Segment - Group 3	33
4.1.8.2.1	Segment RFF – Numbers	33
4.1.8.3	Segment - Group 5	34
4.1.8.3.1	Segment CTA – Contact information	34
4.1.8.3.2	Segment COM – Telephone –/ telefaxnumber / E-Mail of sender	35
4.1.9	Segment - Group 6	36
4.1.9.1	Segment TAX – VAT relating to the whole invoice	36

4.1.10	Segment - Group 7	38
4.1.10.1	Segment CUX – Currency	38
4.1.11	Segment - Group 8	39
4.1.11.1	Segment PAT – Terms of payment	39
4.1.11.2	Segment DTM – Net due date	40
4.2.	Detail Section	41
4.2.1	Segment - Group 26	41
4.2.1.1	Segment LIN – Configuration levels	41
4.2.1.2	Segment IMD – Item description	43
4.2.1.3	Segment IMD – Line item description	45
4.2.1.4	Segment QTY – Quantity	46
4.2.1.5	Segment PCD – Percentage Details	48
4.2.1.6	Segment DTM – Date	49
4.2.1.7	Segment FTX – Additional free text	50
4.2.1.8	Segment - Group 27	52
4.2.1.8.1	Segment MOA – Monetary amount	52
4.2.1.9	Segment - Group 29	53
4.2.1.9.1	Segment PRI – Unit price	53
4.2.1.9	Segment - Group 30	54
4.2.1.9.1	Segment RFF – Numbers	54
4.2.1.9.2	Segment DTM – Date	56
4.2.1.10	Segment - Group 33	57
4.2.1.10.1	Segment-LOC – Location	57
4.2.1.11	Segment - Group 34	59
4.2.1.11.1	Segment TAX – VAT relating to line item	59
4.2.1.12	Segment - Group 35	61
4.2.1.12.1	Segment NAD – Different address information	61
4.2.1.12.2	Segment - Group 38	63
4.2.1.12.2.1.1	Segment CTA – Contact information	63
4.2.1.12.2.2	Segment COM – Telephone –/ telefaxnumber / E-Mail	64
4.3	Summary Section	65
4.3.1	Segment UNS – Section control	65
4.3.2	Segment - Group 50	66
4.3.2.1	Segment MOA – Monetary amount	66
4.3.3	Segment - Group 52	68
4.3.3.1	Segment TAX – Individual VAT rates of invoice	68
4.3.3.2	Segment MOA – individual VAT amounts of invoice	70
4.3.4	Segment UNT	71
4.3.5	Segment UNZ	72

1. Introduction

Verizon is upgrading electronic media available to Verizon current platform customers and customers that have Conferencing services. These customers can opt to receive the Prime Biller Next Gen EDIFACT INVOIC billing medium. Verizon's current platform automates quotes, contracts, ordering, provisioning, and invoicing.

This document provides guidelines for using the Prime Biller Next Gen EDIFACT INVOIC medium. The EDIFACT INVOIC is available at no additional charge to customers in most countries who utilize services billed on Verizon's current platform. The Prime Biller Next Gen EDIFACT INVOIC files are delivered as an electronic transmission. The official copy of the invoice remains the paper invoice and/or the PDF version available to you via the Verizon Enterprise Center.

The guidelines for EDIFACT-Subsets include the following sections:

- Graphical depiction of the message structure
- Overview used segments / segmentgroups and their frequency
- Explanation of the used segments and data elements
- Examples

The two diagrams of the graphical depiction and the graphical presentation include the segments and segment groups which form part of the subset.

For every segment and group the frequency and the status (M - Mandatory, C - Conditional) is stated, as agreed upon in message INVOIC as defined in directory 99B.

How often a segment occurs in the subset is described in the segment and element-definition.

In "Explanation of used segments and dataelements" each segment with its elements is explained and displayed in an example.

The first column in the table "data element-no" lists the composite data elements-identification (Cnnn) or the data element-no (nnnn) according ISO-standard.

The second column shows the EDIFACT-description.

The third and fourth column "Status" and "Format" show status and format of the elements. Status is encoded "M" for mandatory and "C" for conditional fields.

Segment

- A segment is an information-unit which is embedded in the message.
- A segment is the aggregation of logically connected data elements or composite data elements.
- Segments are always placed within a message according to the sequence defined in the branching diagram.
- A segment starts with a segment-tag (e.g. DTM) that identifies each segment and ends with an segment terminator (e.g. ').
- There are user data segments (e.g. DTM) and service segments (e.g. UNH, UNT).

Data elements

A data element is the smallest information unit in a segment. Two or more data elements can be combined in a composite data element. These data elements are called component data elements.

- Data elements, composite data elements and data elements within composite data elements are placed within a segment in a fixed sequence. They can be identified according to their position.
- Data elements and composite data elements can have the following status:
 - mandatory or
 - conditional

The presentation of the data format is based upon UNTDED (United Nations Trade Data Elements Directory).

Examples of data formats:

a2	2 alphabetic characters, fixed length
n7	7 numeric characters, fixed length
an4	4 alphanumeric characters, fixed length
a..6	6 alphabetic characters, variable length
n..5	5 numeric characters, variable length
an..60	60 alphanumeric characters, variable length

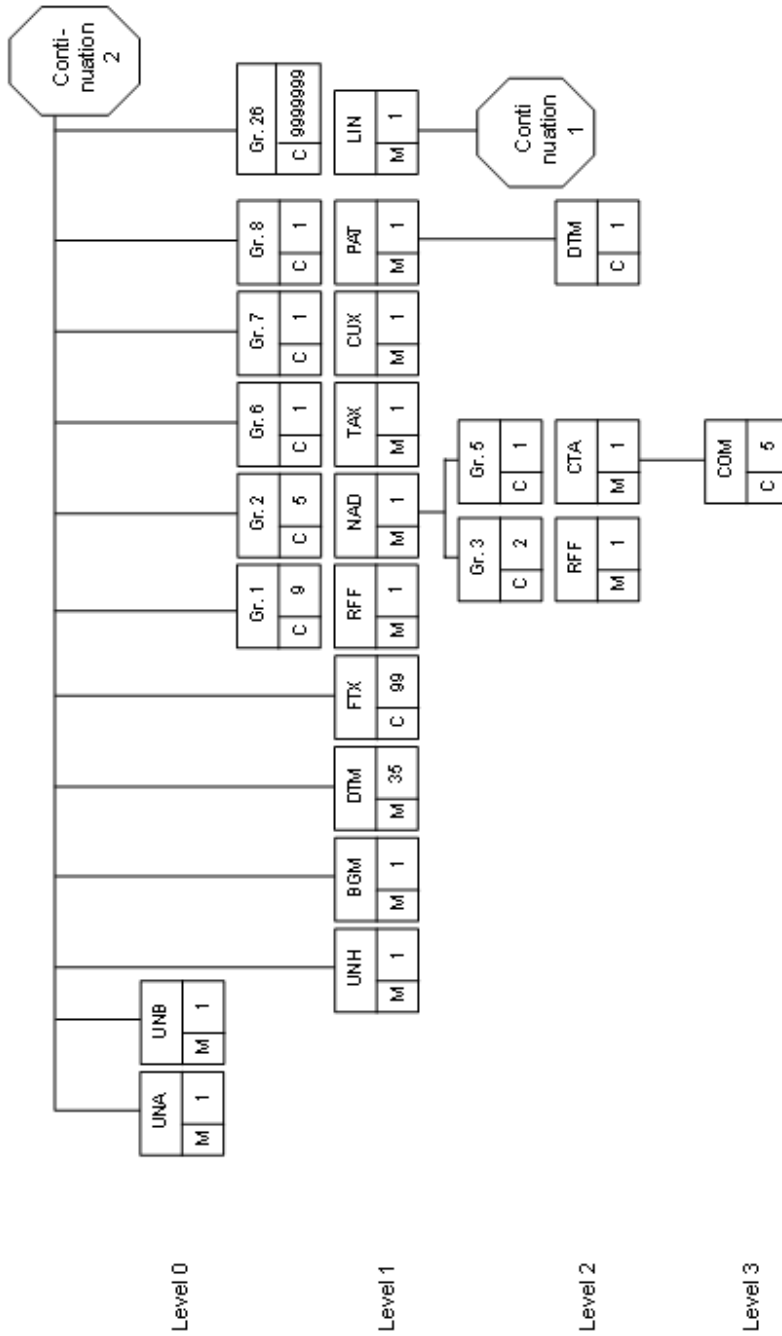
(ISO/IEC Standards ISO 7372 und ISO 9735).

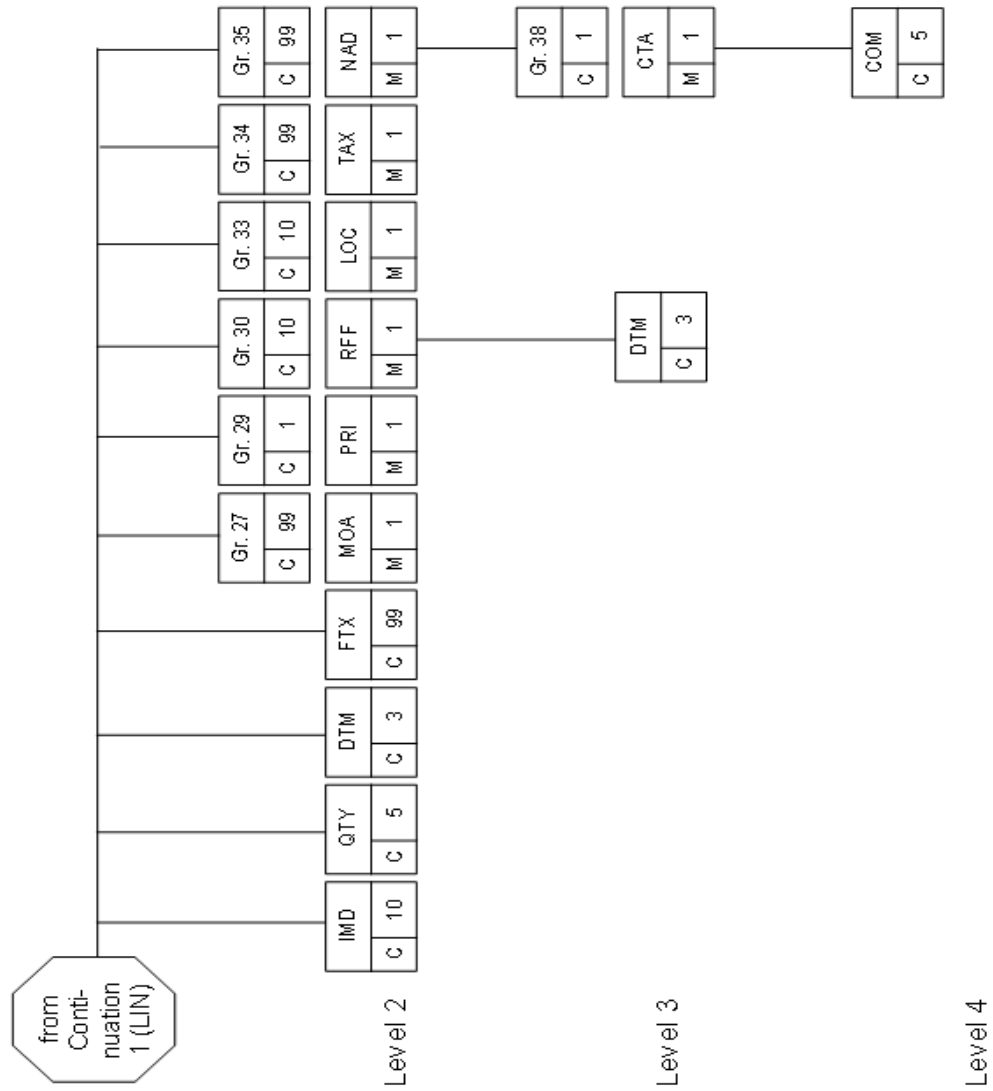
Delimiters used in the UNA-segment separate segments, component data elements, data elements and composite data elements.

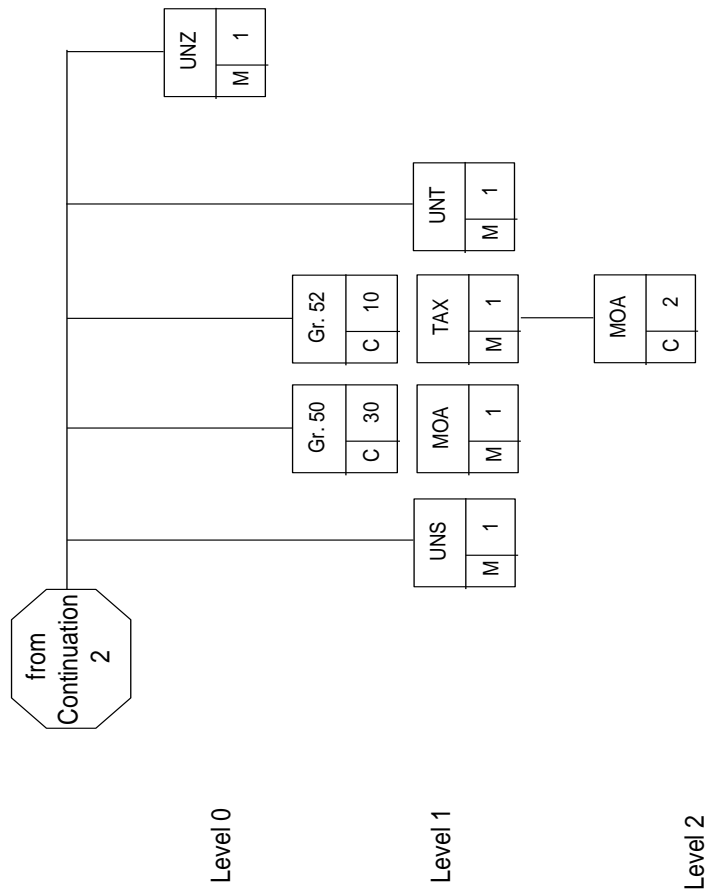


The fifth column “description/valid codes” includes the used qualifiers or a verbal description of the use of this data element. If there are no entries in this column, the data element is not used in this subset.

2. Message Diagram







3. Segments / segment groups and frequency

3.1 Branching diagram 'HEADER SECTION'

	Name	Status	Frequency	
UNA	Character Set Definition	C	1	
UNB	Interchange header	M	1	
UNH	Message header	M	1	
BGM	Beginning of message	M	1	
DTM	Date/time/period	M	35	
FTX	Free text	C	99	
	----- Segment group 1 -----	C	9	
RFF	Reference	M	1	
DTM	Date/time/period	C	5	
FTX	Free text	C	5	
	----- Segment group 2 -----	C	5	
NAD	Name and address	M	1	
	----- Segment group 3 -----	C	2	
RFF	Reference	M	1	
	----- Segment group 5 -----	C	1	
CTA	Contact information	M	1	
COM	Communication contact	C	5	
	----- Segment group 6 -----	C	1	
TAX	Duty/tax/fee details	M	1	



	----- Segment group 7 -----	C	1	
CUX	Currencies	M	1	
	----- Segment group 8 -----	C	1	
PAT	Payment terms basis	M	1	
DTM	Date/time/period	C	1	

3.2 Branching diagram 'DETAIL SECTION'

	Name	Status	Frequency	
	----- Segment group 26 -----	C	9999999	
LIN	Line item	M	1	
IMD	Item description	C	10	
QTY	Quantity	C	5	
PCD	Percent Details	C	1	
DTM	Date/time/period	C	3	
FTX	Free text	C	99	
	----- Segment group 27 -----	C	99	
MOA	Monetary amount	M	1	
	----- Segment group 29 -----	C	1	
PRI	Price details	M	1	
	----- Segment group 30 -----	C	10	
RFF	Reference	M	1	
DTM	Date/time/period	C	3	
	----- Segment group 33 -----	C	10	
LOC	Place/location identification	C	1	
	----- Segment group 34 -----	C	99	

TAX	Duty/tax/fee details	M	1	
	----- Segment group 35 -----	C	99	
NAD	Name and address	M	1	
	----- Segment group 38 -----	C	1	
CTA	Contact information	M	1	
COM	Communication contact	C	5	

3.3 Branching diagram 'SUMMARY SECTION'

	Name	Status	Frequency	
UNS	Section control	M	1	
	----- Segment group 50 -----	M	30	
MOA	Monetary	M	1	
	----- Segment group 52 -----	C	10	
TAX	Duty/tax/fee details	M	1	
MOA	Monetary	C	2	
UNT	Message trailer	M	1	

4. Explanation of segments and data elements

4.1 Header Section

4.1.1 Segment UNA – Delimiter

Message - Section: Header

Segment - Group:

Segment: UNA

Segment - Name: Delimiter

Description: Character Set Definition

DE-No	Description	Status	Format	description/valid codes
	COMPONENT DATA ELEMENT SEPARATOR	M	an1	':'
	DATA ELEMENT SEPARATOR	M	an1	','
	DECIMAL NOTATION	M	an1	','
	RELEASE INDICATOR	M	an1	'?'
	Will be placed in front of a character if the character is listed in the UNA-Segment but shall be displayed as free text.			
	REPETITION SEPARATOR	M	an1	''
	SEGMENT TERMINATOR	M	an1	''' (single quotation)

Note: UNA segment is only provided if the standard separators are not used.



4.1.2 Segment UNB – Sender- and recipient identification

Message - Section: Header

Segment - Group:

Segment: UNB

Segment - Name: Interchange header

Description:: Sender and recipient identification

DE-No	Description	Status	Format	description/ valid codes
S001	SYNTAX IDENTIFIER	M		
0001	Syntax identifier	M	an4	'UNOA'
0002	Syntax version number	M	n1	'1'
S002	INTERCHANGE SENDER	M		
0004	Sender identification	M	an..35	'VERIZON' (Should not be changed!)
0007	Identification code qualifier	C	an..4	
0008	Interchange sender internal identification	C	an..14	
0042	Interchange sender subinternal identification	C	an..35	
S003	INTERCHANGE RECIPIENT	M		
0010	Recipient identification	M	an..35	Code for recipient identification
0007	Identification code qualifier	C	an..4	
0014	Routing address	C	an..14	
S004	DATE/TIME OF PREPARATION	M		
0017	Date	M	N8	Creation date of the file (CCYYMMDD)
0019	Time	M	n4	Creation time of the file (HHMM)
0020	INTERCHANGE CONTROL REFERENCE	M	an..14	number of the transmission
S005	RECIPIENTS REFERENCE/ PASSWORD	C		
0022	Recipients reference password	M	an..14	
0025	Recipients reference password qualifier	C	an..2	
0026	APPLICATION REFERENCE	C	an..14	
0029	PROCESSING PRIORITY CODE	C	a1	
0031	ACKNOWLEDGEMENT REQUEST	C	n1	
0032	COMMUNICATIONS AGREEMENT	C	an..35	



	ID			
0035	TEST INDICATOR	C	n1	'1' for test message

S002.0004

The consecutive number of interchange of the sender / originator.

S003.0010

The agreed upon code for the recipient.

Example:

UNB+UNOA:1+VERIZON+1111111111+20091201:1605+5'

4.1.3 Segment UNH – Beginning of the CONTRACTOR - Invoice

Message - Section: Header

Segment - Group:

Segment: UNH

Segment - Name: Message header

Description: Beginning of the CONTRACTOR - Invoice

DE-Nr	Description	Status	Format	description/ valid codes
0062	MESSAGE REFERENCE NUMBER	M	an..35	Sequence number of the message within the interchange
S009	MESSAGE IDENTIFIER	M		
0065	Message type identifier	M	an..6	'INVOIC'
0052	Message type version number	M	an..6	'D'
0054	Message type release	M	an..3	'99B'
0051	Controlling agency	M	an..2	'UN'
0057	Association assigned code	C	an..6	
0051	Code list directory version number	C	an..6	
0057	Message type sb-function id	C	an..6	
0068	COMMON ACCESS REFERENCE	C	an..35	
S010	STATUS OF TRANSFER	C		
0070	Sequence of transfer	M	n..2	
0073	First and last transfer	C	an1	'C' first partial transfer 'F' last partial transfer
S016	MESSAGE SUBSET IDENTIFICATION	C		
0115	Message subset identification	M	an..14	VETB
0116	Message subset version number	C	an..3	1
0118	Message subset release number	C	an..3	99B
0051	Controlling agency, coded	C	an..3	
S017	MESSAGE IMPLEMENTATION GUIDELINE IDENTIFICATION	C		
0121	Message implementation subset identification	C	an..14	VZ RD
0122	Message implementation subset version number	C	an..3	1
0124	Message implementation subset release number	C	an..3	0



0051	Controlling agency, coded	C	an..3	
S018	SCENARIO IDENTIFICATION	C		
0127	Scenario identification	C	an..14	
0128	Scenario version number	C	an..3	
0130	Scenario release number	C	an..3	
0051	Controlling agency, coded	C	an..3	

It is intended that the amount of data per file does not exceed 20 Mb. Composite data element S010 does only occur if the number of bytes exceeds 20Mb.

Example 1: Transfer of an invoice in one message

UNH+1+INVOIC:D:99B:UN++VETB:1:99B+VZ RD:1:0'

Example 1: Transfer of an invoice in three messages

UNH+1+INVOIC:D:99B:UN+1:C+VETB:1:99B+VZ RD:1:0'

UNH+2+INVOIC:D:99B:UN+2+VETB:1:99B+VZ RD:1:0'

UNH+3+INVOIC:D:99B:UN+3:F+VETB:1:99B+VZ RD:1:0'

4.1.4 Segment BGM – Type, number and status of invoice

Message - Section: Header

Segment - Group:

Segment: BGM

Segment - Name: Beginning of message

Description: Information about invoice

DE-No	Description	Status	Format	description/ valid codes
C002	DOCUMENT/MESSAGE NAME	C		
1001	Document/message name, coded	C	an..3	'380' = invoice '381' = credit note
1131	Code list qualifier	C	an..3	
3055	Code list responsible agency, coded	C	an..3	
1000	Document/message name	C	an..35	
1004	DOCUMENT/MESSAGE NUMBER	M	an..35	invoice number
1225	MESSAGE FUNCTION, CODED	C	an..3	'9' = original '7' = duplicate
4343	RESPONSE TYPE, CODED	C	an..3	

The credit note is equated with an invoice.

Examples:

BGM+380+12345678+9'

BGM+381+98765432+9'

4.1.5 Segment DTM – Invoice date and period

Message - Section: Header

Segment - Group:

Segment: DTM

Segment - Name: Date/time/period

Description: Invoice date and period

DE-No	Description	Status	Format	Description / valid codes
C507	DATE/TIME/PERIOD	M		
2005	Date/time/period qualifier	M	an..3	'3' = date of invoice '167' = charge period start date '168' = charge period end date '669' = Financial coverage period
2380	Date/time/period	C	an..35	Invoice data or charge period
2379	Date/time/period format qualifier	C	an..3	'102' (CCYYMMDD)

Examples:

DTM+3:20091212:102'

4.1.6 Segment FTX – Free text

4.1.6.1 Segment FTX – Invoice Instruction/Invoice text

Message - Section: Header

Segment - Group:

Segment: FTX

Segment - Name: Free text

Description: Free text assigned to the invoice.

DE-No	Description	Status	Format	Description / valid codes
4451	TEXT SUBJECT QUALIFIER	M	an..3	'INV'
4453	TEXT FUNCTION, CODED	C	an..3	1
C107	TEXT REFERENCE	C		
4441	Free text, coded	M	an..3	
1131	Code list qualifier	C	an..3	
3055	Code list responsible agency, coded	C	an..3	
C108	TEXT LITERAL	C		
4440	Free text	M	an..512	1. line of text
4440	Free text	C	an..512	2. line of text
4440	Free text	C	an..512	3. line of text
4440	Free text	C	an..512	4. line of text
4440	Free text	C	an..512	5. line of text
3453	LANGUAGE NAME CODED	C	an..3	ISO 639 language code
4447	TEXT FORMATTING, CODED	C	an..3	

Example:

FTX+INV+1++Text1:Text2:Text3:Text4:Text5'

4.1.6.2 Segment FTX – Invoice language

Message - Section: Header

Segment - Group:

Segment: FTX

Segment - Name: Free text

Description: Invoice Language.

DE-No	Description	Status	Format	Description / valid codes
4451	TEXT SUBJECT QUALIFIER	M	an..3	ACB
4453	TEXT FUNCTION, CODED	C	an..3	
C107	TEXT REFERENCE	C		
4441	Free text, coded	M	an..3	
1131	Code list qualifier	C	an..3	
3055	Code list responsible agency, coded	C	an..3	
C108	TEXT LITERAL	C		
4440	Free text	M	an..512	
4440	Free text	C	an..512	
4440	Free text	C	an..512	
4440	Free text	C	an..512	
4440	Free text	C	an..512	
3453	LANGUAGE NAME CODED	C	an..3	Language code as defined in ISO 3166
4447	TEXT FORMATTING, CODED	C	an..3	

Example:

FTX+ACB++++DE'

4.1.6.3 Segment FTX – Payables information

Message - Section: Header

Segment - Group:

Segment: FTX

Segment - Name: Free text

Description: Payables information

DE-No	Description	Status	Format	Description / valid codes
4451	TEXT SUBJECT QUALIFIER	M	an..3	PAY - Payables information
4453	TEXT FUNCTION, CODED	C	an..3	
C107	TEXT REFERENCE	C		
4441	Free text, coded	M	an..3	
1131	Code list qualifier	C	an..3	
3055	Code list responsible agency, coded	C	an..3	
C108	TEXT LITERAL	C		
4440	Free text	M	an..512	
4440	Free text	C	an..512	
4440	Free text	C	an..512	
4440	Free text	C	an..512	
4440	Free text	C	an..512	
3453	LANGUAGE NAME CODED	C	an..3	Language code as defined in ISO 3166
4447	TEXT FORMATTING, CODED	C	an..3	

Example:

FTX+PAY+1++HOW TO PAY YOUR INVOICE+EN'

4.1.6.4 Segment FTX – General information

Message - Section: Header

Segment - Group:

Segment: FTX

Segment - Name: Free text

Description: General information

DE-No	Description	Status	Format	Description / valid codes
4451	TEXT SUBJECT QUALIFIER	M	an..3	AAI – General information
4453	TEXT FUNCTION, CODED	C	an..3	
C107	TEXT REFERENCE	C		
4441	Free text, coded	M	an..3	
1131	Code list qualifier	C	an..3	
3055	Code list responsible agency, coded	C	an..3	
C108	TEXT LITERAL	C		
4440	Free text	M	an..512	
4440	Free text	C	an..512	
4440	Free text	C	an..512	
4440	Free text	C	an..512	
4440	Free text	C	an..512	
3453	LANGUAGE NAME CODED	C	an..3	Language code as defined in ISO 3166
4447	TEXT FORMATTING, CODED	C	an..3	

Example:

FTX+AAI+1++ For invoice enquiries please visit: <https://enterprisecenter.verizon.com> +EN'

4.1.6.5 Segment FTX – Customer Remarks

Message - Section: Header

Segment - Group:

Segment: FTX

Segment - Name: Free text

Description: General information

DE-No	Description	Status	Format	Description / valid codes
4451	TEXT SUBJECT QUALIFIER	M	an..3	CUR – Customer Remarks
4453	TEXT FUNCTION, CODED	C	an..3	
C107	TEXT REFERENCE	C		
4441	Free text, coded	M	an..3	
1131	Code list qualifier	C	an..3	
3055	Code list responsible agency, coded	C	an..3	
C108	TEXT LITERAL	C		
4440	Free text	M	an..512	
4440	Free text	C	an..512	
4440	Free text	C	an..512	
4440	Free text	C	an..512	
4440	Free text	C	an..512	
3453	LANGUAGE NAME CODED	C	an..3	Language code as defined in ISO 3166
4447	TEXT FORMATTING, CODED	C	an..3	

Example:

FTX+CUR+1++ customer remarks go here+EN'

4.1.6.6 Segment FTX – Tax Declaration

Message - Section: Header

Segment: FTX

Segment - Name: Free text

Description: General information

DE-No	Description	Status	Format	Description / valid codes
4451	TEXT SUBJECT QUALIFIER	M	an..3	TXD – Tax Declaration
4453	TEXT FUNCTION, CODED	C	an..3	
C107	TEXT REFERENCE	C		
4441	Free text, coded	M	an..3	
1131	Code list qualifier	C	an..3	
3055	Code list responsible agency, coded	C	an..3	
C108	TEXT LITERAL	C		
4440	Free text	M	an..512	
4440	Free text	C	an..512	
4440	Free text	C	an..512	
4440	Free text	C	an..512	
4440	Free text	C	an..512	
3453	LANGUAGE NAME CODED	C	an..3	Language code as defined in ISO 3166
4447	TEXT FORMATTING, CODED	C	an..3	



4.1.7 Segment - Group 1

4.1.7.1 Segment RFF – Numbers

Message - Section: Header

Segment - Group: 1

Segment: RFF

Segment - Name: Reference

Description: Describes the relevant reference numbers

DE-No	Description	Status	Format	Description / valid codes
C506 1153	REFERENCE Reference qualifier	M M	an..3	'ABO' = Originator Reference (this segment is for Verizon internal use) 'ADE' = customer account (Customer ID) 'GN' = Government Reference Number (Note: This can contain the Government assigned Invoice Sequence Number or Portuguese SAF-T Invoice Number) 'IT' = customer number (BAN) 'IV' = invoice number 'MR' = Message Recipient (contains EBID) 'OI' = Previous Invoice Number (Invoice being adjusted) 'PW' = customer purchase order Number 'TL' = Tax Exemption License Number
1154	Reference number	C	an..35	
1156	Line number	C	an..6	



4000	Reference version number	C	an..35	
1060	Revision number	C	an..6	

Example:

RFF+IV:12345678'

RFF+IT:12345678'

4.1.7.2 Segment DTM – Authorization date

Message - Section: Header
 Segment - Group: 1
 Segment: DTM
 Segment - Name: Date/time/period
 Description: Authorization date

DE-No	Description	Status	Format	Description / valid codes
C507	DATE/TIME/PERIOD	M		
2005	Date/time/period qualifier	M	an..3	'160' = Authorization Date
2380	Date/time/period	C	an..35	Authorization date in form CCYYMMDD
2379	Date/time/period format qualifier	C	an..3	Standard: '102' (CCYYMMDD); will not be stated

Example:

DTM+160:20091221'

4.1.7.3 Segment FTX – Free Text

Message - Section: Header
 Segment - Group: 1
 Segment: FTX
 Segment - Name: Free text
 Description: Free text assigned to the invoice item

DE- No	Description	Status	Format	Description/Valid Codes
4451	TEXT SUBJECT CODE QUALIFIER	M	an..3	'REG' = Regulatory Information
4453	TEXT FUNCTION, CODED	C	an..3	'1' text for subsequent use
C107 4441 1131 3055	TEXT REFERENCE Free text value code Code list identification code Code list responsible agency code	C M C C	 an..17 an..3 an..3	
C108 4440 4440 4440 4440 4440	TEXT LITERAL Free text value Free text value Free text value Free text value Free text value	C M C C C C	 an..512 an..512 an..512 an..512 an..512	1. Line of text 2. Line of text 3. Line of text 4. Line of text 5. Line of text
3453	LANGUAGE NAME CODE	C	an..3	ISO 639 language code
4447	TEXT FORMATTING, CODED	C	an..3	

Example:

FTX+REG+1++Argentine Federal Tax Authorities (AFIP) electronic authorization code (C.A.E.)
 Number - 9999999'



4.1.8 Segment - Group 2

4.1.8.1 Segment NAD – Addresses of the parties

Message - Section: Header

Segment - Group: 2

Segment: NAD

Segment - Name: Name and address

Description: Name and address of provider and invoicee

DE-No	Description	Status	Format	Description / valid codes
3035	PARTY QUALIFIER	M	an..3	'SE' = provider 'IV' = invoicee 'BY' = buyer 'TY' = Provider
C082	PARTY IDENTIFICATION DETAILS	C		
3039	Party id identification	M	an..35	
1131	Code list qualifier	C	an..3	
3055	Code list responsible agency, coded	C	an..3	
C058	NAME AND ADDRESS	C		
3124	Name and address line	M	an..35	
3124	Name and address line	C	an..35	
3124	Name and address line	C	an..35	
3124	Name and address line	C	an..35	
3124	Name and address line	C	an..35	
C080	PARTY NAME	C		
3036	Party name	M	an..35	Name1
3036	Party name	C	an..35	Name2
3036	Party name	C	an..35	Name3
3036	Party name	C	an..35	Name4
3036	Party name	C	an..35	Name5
3045	Party name format, coded	C	an..3	
C059	STREET	C		
3042	Street and number/P.O. Box	M	an..35	street and number/ P.O. Box
3042	Street and number/P.O. Box	C	an..35	street and number/ P.O. Box
3042	Street and number/P.O. Box	C	an..35	street and number/ P.O. Box
3164	CITY NAME	C	an..35	City
3229	COUNTRY SUB-ENTITY	C	an..9	



1131	IDENTIFICATION			
3055	Code List Identification Code	C	an..3	'228' = County 'ZZ' = Mutually Defined
	Code List Responsible Agency Code	C	an..3	
3228	Country Sub-Element Name	C	an..35	
3251	POSTCODE IDENTIFICATION	C	an..9	ZIP-code
3207	COUNTRY, CODED	C	an..3	ISO 3166 country code 'DE' for Germany

Example:

NAD+SE+++VERIZON:DEUTSCHLAND+SEBRATHWEG+DORTMUND++44149+DE'
NAD+IV+++JOHN Q. PUBLIC+SAMPLE STREET 1+MUNSTER++29633+DE'

4.1.8.2 Segment - Group 3

4.1.8.2.1 Segment RFF – Numbers

Message - Section: Header

Segment - Group: 3

Segment: RFF

Segment - Name: Reference

Description: Information about fiscal number and VAT Reg No.

DE-No	Description	Status	Format	Description / valid codes
C506	REFERENCE	M		
1153	Reference qualifier	M	an..3	'VA' = VAT Reg No. 'AHP' = Tax registration number
1154	Reference number	C	an..35	Number
1156	Line number	C	an..6	
4000	Reference version number	C	an..35	
1060	Revision number	C	an..6	

Example:

RFF+VA:DE 12345678'

4.1.8.3 Segment - Group 5

4.1.8.3.1 Segment CTA – Contact information

Message - Section: Header

Segment - Group: 5

Segment: CTA

Segment - Name: Contact information

Description:

DE-No	Description	Status	Format	Description / valid Codes
3139	CONTACT FUNCTION, CODED	C	an..3	'IC' = information contact
C056	DEPARTMENT OR EMPLOYEE DETAILS	C		
3413	Department or employee identification	C	an..17	
3412	Department or employee	C	an..35	name

Example:

CTA+IC+:Callcentre 1'



4.1.8.3.2 Segment COM – Telephone –/ telefaxnumber / E-Mail of sender

Message - Section: Header

Segment - Group: 5

Segment: COM

Segment - Name: Communication contact

Description: Phone-, faxnumber or E-Mail for invoice information

DE-No	Description	Status	Format	Description / valid codes
C076	COMMUNICATION CONTACT	M		
3148	Communication number	M	an..512	Phone- or fax number for invoice information
3155	Communication channel qualifier	M	an..3	'TE' = Phone 'FX' = Fax 'EM' = E-Mail

Example:

COM+0223 23-456:TE'

COM+0223 23-123:FX'

COM+contact@verizon.com:EM'

4.1.9 Segment - Group 6

4.1.9.1 Segment TAX – VAT relating to the whole invoice

Message - Section: Header

Segment - Group: 6

Segment: TAX

Segment - Name: Duty/tax/fee details

Description: VAT of the invoice at the standard rate (can be superseded by tax segments of the invoice positions)

DE-No	Description	Status	Format	Description / valid codes
5283	DUTY/TAX/FEE FUNCTION QUALIFIER	M	an..3	'9' = VAT rate for the whole invoice
C241	DUTY/TAX/FEE TYPE	C		'VAT' = Value added tax
5153	Duty/tax/fee type, coded	C	an..3	
1131	Code list qualifier	C	an..3	
3055	Code list responsible agency, coded	C	an..3	
5152	Duty/tax/fee type	C	an..35	
C533	DUTY/TAX/FEE ACCOUNT DETAIL	C		
5289	Duty/tax/fee account identification	M	an..6	
1131	Code list qualifier	C	an..3	
3055	Code list responsible agency, coded	C	an..3	
5286	DUTY/TAX/FEE ASSESSMENT BASIS	C	an..15	
C243	DUTY/TAX/FEE DETAIL	C		Tax in percent
5279	Duty/tax/fee rate identification	C	an..7	
1131	Code list qualifier agency, coded	C	an..3	
3055	Code list responsible agency, coded	C	an..3	
5278	Duty/tax/fee rate	C	an..17	
5273	Duty/tax/fee rate basis identification	C	an..12	
1131	Code list qualifier	C	an..3	
3055	Code list responsible agency, coded	C	an..3	
5305	DUTY/TAX/FEE CATEGORY, CODED	C	an..3	
3446	PARTY TAX IDENTIFICATION NUMBER	C	an..20	
3446	PARTY TAX IDENTIFICATION NUMBER	C	an..20	



Example:

TAX+9+VAT+++:::16'

4.1.10 Segment - Group 7

4.1.10.1 Segment CUX – Currency

Message - Section: Header
 Segment - Group: 7
 Segment: CUX
 Segment - Name: Currencies
 Description: Charge payment currency

DE-No	Description	Status	Format	Description / valid codes
C504 6347	CURRENCY DETAILS Currency details qualifier	C M	an..3	'1' = charge payment currency 'EUR' = EURO ISO 4217 currency code
6345	Currency, coded	C	an..3	
6343	Currency qualifier	C	an..3	
6348	Currency rate base	C	n..4	
C504 6347 6345	CURRENCY DETAILS Currency details qualifier Currency, coded	C M C	an..3 an..3	'6' information currency 'GBP' ISO 4217 currency code
6343	Currency qualifier	C	an..3	
6348	Currency rate base	C	n..4	
5402	RATE OF EXCHANGE	C	n..12	Rate of exchange. Amount to pay in currency '1' multiplied by rate of exchange results in amount to pay in the target currency '3'.
6341	CURRENCY MARKET EXCHANGE, CODED	C	an..3	

Examples:

CUX+1:EUR+6'

CUX+1:GBP+6:EUR+0.667965'

4.1.11 Segment - Group 8

4.1.11.1 Segment PAT – Terms of payment

Message - Section: Header
 Segment - Group: 8
 Segment: PAT
 Segment - Name: Payment terms basis
 Description: Terms of payment

DE-No	Description	Status	Format	Description / valid codes
4279	PAYMENT TERMS TYPE QUALIFIER	M	an..3	'5' = discount not applicable
C110	PAYMENT TERMS	C		
4277	Terms of payment identification	M	an..17	
1131	Code list qualifier	C	an..3	
3055	Code list responsible agency, coded	C	an..3	
4276	Terms of payment	C	an..35	
4276	Terms of payment	C	an..35	
C112	TERMS/TIME INFORMATION			
2475	Payment time reference, coded	M	an..3	'72' = payment date
2009	Time relation, coded	C	an..3	'1' = reference date
2151	Type of period, coded	C	an..3	
2152	Number of periods	C	n..3	

Example:

PAT+5++72:1'

4.1.11.2 Segment DTM – Net due date

Message - Section: Header
 Segment - Group: 8
 Segment: DTM
 Segment - Name: Date/time/period
 Description: Net due date

DE-No	Description	Status	Format	Description / valid codes
C507	DATE/TIME/PERIOD	M		
2005	Date/time/period qualifier	M	an..3	'13' = net due date
2380	Date/time/period	C	an..35	Payment date in form CCYYMMDD
2379	Date/time/period format qualifier	C	an..3	Standard: '102' (CCYYMMDD); will not be stated

Example:

DTM+13:20091221'

4.2. Detail Section

4.2.1 Segment - Group 26

4.2.1.1 Segment LIN – Configuration levels

Message - Section: Detail

Segment - Group: 26

Segment: LIN

Segment - Name: Line item

Description: Configuration levels within the invoice

DE-No	Description	Status	Format	Description / valid codes
1082	LINE ITEM NUMBER	C	n..6	Sequential line-number
1229	ACTION REQUEST/ NOTIFICATION, CODED	C	an..3	
C212 7140 7143	ITEM NUMBER IDENTIFICATION Item number Item number type, coded	C C C	 an..35 an..3	Item type identification code
1131 3055	Code list qualifier Code list responsible agency, coded	C C	an..3 an..3	
C829 5495 1082	SUB-LINE INFORMATION SUB-LINE INDICATOR, CODED LINE ITEM NUMBER	C C	an..3 n..6	
1222	CONFIGURATION LEVEL	C	n..2	Number of the configuration level
7083	CONFIGURATION, CODED	C	an..3	



The message detail section introduces hierarchy levels. The different hierarchy levels are differentiated by DE 1222, the highest level starts with 0. The composite data element C829 indicates if the level is a sub-level, and in data-element GR25:LIN:C829:1082 it states the content of data-element GR25:LIN:1082 (Line item number) of the next higher level.

Level	DE 7143	DE 5495	DE 1222	Description
	Invoice			
1	SEC		1	Section of the invoice
2	ARP	1	2	Grouping information
3	REF	1	3	Internet product/ service information
4	GRP	1	4	Recurring, non-recurring, usage, discount adjustment, credit and Statement of Account groups
5	POS	1	5	Invoice text and actual charge information

All Level:

- Additional information in segment IMD

Examples:

LIN+1++:SEC++1'

LIN+2++:ARP+1:1+2'

LIN+3++:REF+1:2+3'

LIN+4++:GRP+1:3+4'

LIN+5++:POS+1:4+5'

4.2.1.2 Segment IMD – Item description

Message - Section: Detail
 Segment - Group: 26
 Segment: IMD
 Segment - Name: Item description
 Description: Additional description

DE-No	Description	Status	Format	Description / valid codes
7077	ITEM DESCRIPTION TYPE, CODED	C	an..3	'F' = free text
7081	ITEM CHARACTERISTIC, CODED	C	an..3	
C273	ITEM DESCRIPTION	C		
7009	Item description identification	C	an..17	SEC, ARP, REF, GRP, POS or VBD
1131	Code list identification code	C	an..3	
3055	Code list responsible agency code	C	an..3	
7008	Item description	C	an..256	see table of codes
7008	Item description	C	an..256	Corresponding text
3453	Language name code	C	an..3	
7383	SURFACE/LAYER CODE	C	an..3	

Contents:

Level	Qualifier	IMD	Description
1	SEC	Voice/ Internet/ Discounts/ Equipment	Section of the Invoice
2	ARP	Voice: Product	Grouping information



		Conferencing: Product Indirect: Product Discount / Adjustment / Credit: Product Equipment: Product Statement of Account: "STATEMENT OF ACCOUNT" Taxes: "TAXES AND SURCHARGES SUMMARY"	
3	REF	Voice: Service ID Conferencing: CONFIRMATION NUMBER Indirect: Service ID/Circuit ID Discount / Adjustment / Credit: Service ID/Circuit ID Equipment: Service ID/Circuit ID Statement of Account: Previous Invoice number and Date Taxes: STATE, COUNTY AND CITY TAXES AND SURCHARGES	Internet product/service information
4	GRP	Voice: MRR/NRR/USAGE Conferencing: MRR/NRR/USAGE Indirect: MRR/NRR/USAGE Discount / Adjustment / Credit: DISCOUNT/ADJ/CREDIT Equipment: MRR/NRR Statement of Account: OPEN/CLOSED Taxes: VALUE ADDED TAX	Recurring, Non-recurring, Usage and Discount groups.
5	POS	Invoice Text	Invoice text and actual charge information

Example:

IMD+F++SEC:::12345678'

IMD+F++SEC:::Internet'

IMD+F++REF:::999888777/D49112233999'

IMD+F++GRP:::NRR'

IMD+F++GRP:::MRR'

IMD+F++POS:::1234:LOCAL'

IMD+F++POS:::DSL Service Set Up'

4.2.1.3 Segment IMD – Line item description

Message - Section: Detail
 Segment - Group: 26
 Segment: IMD
 Segment - Name: Item description
 Description: Additional codes for the description

DE-No	Description	Status	Format	Description / valid codes
7077	ITEM DESCRIPTION TYPE, CODED	C	an..3	'C' = Code
7081	ITEM CHARACTERISTIC, CODED	C	an..3	
C273	ITEM DESCRIPTION	C		Verizon table of codes Code or number of the corresponding information
7009	Item description identification	C	an..17	
1131	Code list identification code	C	an..3	
3055	Code list responsible agency code	C	an..3	
7008	Item description	C	an..256	
7008	Item description	C	an..256	
3453	Language name code	C	an..3	
7383	SURFACE/LAYER INDICATOR, CODED	C	an..3	

Example:

IMD+C++ZZ::NIGHT

4.2.1.4 Segment QTY – Quantity

Message - Section: Detail
 Segment - Group: 26
 Segment: QTY
 Segment - Name: Quantity
 Description: Quantity

DE-No	Description	Status	Format	Description / valid codes
C186	QUANTITY DETAILS	M		
6063	Quantity qualifier	M	an..3	Quantity identification
6060	Quantity	M	n..35	Quantity
6411	Measure unit qualifier	C	an..3	Measurement unit code

Example:

QTY+107:501:SEC'

Quantity identification:

Quantity identification	6063
Unit	107
Original Duration	236

Measurement unit code	6411
Each	EA
Miles	DH
Number of calls	GA
KiloByte	KB



Megabyte	MB
Minutes	MIN
Months	MON
General units of quantity	NAR
Seconds	SEC
Tariff units	TE



4.2.1.5 Segment PCD – Percentage Details

Message - Section: Detail
Segment - Group: 26
Segment: PCD
Segment - Name: Percentage Details
Description: LPC Percentage

DE-No	Description	Status	Format	Descriptor / valid codes
C501	Percentage Details	M		
5245	Percentage Type Code Qualifier	M	an..3	'68' = LPC Percentage of Due Amount
5482	Percentage	C	n..10	

Examples:

PCD+68:0.015'

4.2.1.6 Segment DTM – Date

Message - Section: Detail
 Segment - Group: 26
 Segment: DTM
 Segment - Name: Date/time/period
 Description: Date of the item

DE-No	Description	Status	Format	Descriptor / valid codes
C507	DATE/TIME/PERIOD	M		
2005	Date/time/period qualifier	M	an..3	See table
2380	Date/time/period	C	an..35	
2379	Date/time/period format qualifier	C	an..3	See table

Examples:

DTM+194:20091201:102'

DTM+163:20091203071034:204'

Table:

Date qualifier	DE 2005	DE 2379	Format
Accounting period start date	194	102	CCYYMMDD
Accounting period end date	206	102	CCYYMMDD
Processing start time	163	204	CCYYMMDDHMMSS
Transaction Creation date	97	102	CCYYMMDD
Payment Date	138	102	CCYYMMDD
Contract Effective date	92	102	CCYYMMDD

4.2.1.7 Segment FTX – Additional free text

Message - Section: Detail

Segment - Group: 26

Segment: FTX

Segment - Name: Free text

Description: Free text assigned to the invoice item

DE-No	Description	Status	Format	Description / valid codes
4451	TEXT SUBJECT QUALIFIER	M	an..3	'AAA' = Goods description) 'ACB' = Additional Information 'ACF' = Additional Attribute Information 'AGG' = Customer Information 'AGQ' = Inventory 'ALC' = Allowance/Charge Information 'LIN' = Text on line item 'OST' = Other Service Information 'PRD' = Product Information
4453	TEXT FUNCTION, CODED	C	an..3	'1' text for subsequent use
C107	TEXT REFERENCE	C		
4441	Free text, coded	M	an..17	
1131	Code list qualifier	C	an..3	'ZZZ' = Customer Defined Field
3055	Code list responsible agency, coded	C	an..3	'ZZZ' = Verizon specific codes
C108	TEXT LITERAL	C		
4440	Free text	M	an..512	Line 1
4440	Free text	C	an..512	Line 2
4440	Free text	C	an..512	Line 3
4440	Free text	C	an..512	Line 4
4440	Free text	C	an..512	Line 5
3453	LANGUAGE NAME CODED	C	an..3	ISO 639 language code
4447	TEXT FORMATTING, CODED	C	an..3	



Example:

FTX+ACG+1++Cust Info text '

Customer Defined Fields: For GID customers with contract specific Customer Defined Fields, Verizon provides up to 10 generic labels (i.e. CUSTOM FIELD 1 through CUSTOM FIELD 10). Each generic label has a customer defined description. Customer defined fields are provide in FTX+OST segments at HL5. The following elements are provided:

- **Generic label** (i.e. CUSTOM FIELD 1 through CUSTOM FIELD 20) is provided in FTX03-01 (4441 - Free text, coded) with "ZZZ" in FTX03-02 (1131 – Code list qualifier) and "ZZZ" in FTX03-03 (3055 – Code list responsible agency, coded)
- **Customer defined value** is provided in the first occurrence of FTX04-01 (4440- Free text)
- **Customer defined description** is provided in the second occurrence of FTX04-02 (4440- Free text)

Example: FTX+OST+1+*CUSTOM FIELD 1:ZZZ:ZZZ*+ **Customer defined value:** *Customer defined description*'

4.2.1.8 Segment - Group 27

4.2.1.8.1 Segment MOA – Monetary amount

Message - Section: Detail
 Segment - Group: 27
 Segment: MOA
 Segment - Name: Monetary amount
 Description: Invoice item amount

DE-No	Description	Status	Format	Description / valid codes
C516 5025	MONETARY AMOUNT Monetary amount type qualifier	M M	an..3	'8' = discount amount '23' = Charge Amount '38' = net amount per invoice item '98' = Original Amount '124' = Tax Amount) '139' = Total Payment Amount '165' = Adjustment Amount '263' = Outstanding Amount '301' = Total outstanding invoices past due (LPC basis amount) '304' = Other Charges Amount
5004	Monetary amount	C	n..18	
6345	Currency, coded	C	an..3	
6343	Currency qualifier	C	an..3	
4405	Status, coded	C	an..3	'9' = information

Example:

MOA+38:115.23'



4.2.1.9 Segment - Group 29

4.2.1.9.1 Segment PRI – Unit price

Message - Section: Detail
Segment - Group: 29
Segment: PRI
Segment - Name: Price details
Description: Unit price

DE-No	Description	Status	Format	Description / valid codes
C509	PRICE INFORMATION	C		
5125	Price qualifier	M	an..3	'CAL'
5118	Price	C	n..15	Amount (with sign, decimal point and up to 5 decimals)
5375	Price type, coded	C	an..3	
5387	Price type qualifier	C	an..3	
5284	Unit price basis	C	n..9	
6411	Measure unit qualifier	C	an..3	
5213	SUB-LINE PRICE CHANGE, CODED	C	an..3	

Example:

PRI+CAL:0.1043'

4.2.1.9 Segment - Group 30

4.2.1.9.1 Segment RFF – Numbers

Message - Section: Detail

Segment - Group: 30

Segment: RFF

Segment - Name: Reference

Description: Describes the relevant reference numbers

DE-No	Description	Status	Format	Description / valid codes
C506 1153	REFERENCE Reference qualifier	M M	an..3	'AAV' = Enquiry Number 'ACD' = Additional Reference Number (Related Instance ID) 'ACL' = Principle Reference Number (Instance ID) 'AGT' = Service Group Identification Number 'AJS' = Agreement Number 'ALT' = Previous Tax Control Number (Note: For adjustments, this can contain the Portuguese SAF-T Invoice Number (RFF+GN) being adjusted) 'ANJ' = Authorization Number 'AST' = Group Reference Number (Related Product) 'AVV' = Enquiry Number 'AWE' = Cost Centre 'BN' = Booking Reference Number 'CN' Carrier Reference Number (Circuit ID) 'CO' = customer reference number 'CT' = contract number 'FC' = fiscal number of third partie provider



				'IV' = invoice number 'OI' = Previous Invoice Number (Invoice being adjusted) 'PW' = Customer Purchases Order Number
1154	Reference number	C	an..35	
1156	Line number	C	an..6	
4000	Reference version number	C	an..35	
1060	Revision number	C	an..6	

Example:

RFF+IV:12345678'

4.2.1.9.2 Segment DTM – Date

Message - Section: Detail
 Segment - Group: 30
 Segment: DTM
 Segment - Name: Date/time/period
 Description: Date of the reference

DE-No	Description	Status	Format	Descriptor / valid codes
C507	DATE/TIME/PERIOD	M		
2005	Date/time/period qualifier	M	an..3	'384' = Previous Invoice Date (Invoice being adjusted)
2380	Date/time/period	C	an..35	Date
2379	Date/time/period format qualifier	C	an..3	'102' = format CCYYMMDD

Example:

DTM+384:20091215:102'



4.2.1.10 Segment - Group 33

4.2.1.10.1 Segment-LOC – Location

Message - Section: Detail

Segment - Group: 33

Segment: LOC

Segment - Name: Place/location identification

Description: The segment indicates the destination/departure phone number and destination zone.

DE-No	Format	Status	Description	Description / valid codes
3227	an..3	M	PLACE/LOCATION QUALIFIER	'5' = place of departure '7' = Place of Delivery (Used when the Dialed Number is different than the Termination Number. In which case LOC+7 will contain the Termination Number) '8' = place of destination '184' = Physical Location
C517 - 3225 - 1131 - 3055 - 3224	an..25 an..3 an..3 an..256	C C C C	LOCATION IDENTIFICATION Place/location identification Code list qualifier Code list responsible agency, coded Place/location	phone number network name
C519 - 3223 - 1131 - 3055 - 3222	an..25 an..3 an..3 an..70	C C C C	RELATED LOCATION ONE IDENTIFICATION Related place/location one identification Code list qualifier Code list responsible agency, coded Related place/location one	
C553 - 3233	an..25	C C	RELATED LOCATION TWO IDENTIFICATION Related place/location two	



Message - Section: Detail
Segment - Group: 33
Segment: LOC
Segment - Name: Place/location identification
Description: The segment indicates the destination/departure phone number and destination zone.

- 1131	an..3	C	identification	
- 3055	an..3	C	Code list qualifier	
- 3232	an..70	C	Code list responsible agency, coded	
5479	an..3	C	Related place/location two	
			RELATION, CODED	

Examples:

LOC+8+08150815:::Dortmund'

LOC+8+01710815:::D1'

4.2.1.11 Segment - Group 34

4.2.1.11.1 Segment TAX – VAT relating to line item

Message - Section: Detail

Segment - Group: 34

Segment: TAX

Segment - Name: Duty/tax/fee details

Description: VAT rate for the invoice item. Supersedes the default VAT rate provided in the header section.

DE-No	Description	Status	Format	Description / valid codes
5283	DUTY/TAX/FEE FUNCTION QUALIFIER	M	an..3	'1' = VAT rate for the invoice item '6' = Fee '7' = Tax
C241 5153	DUTY/TAX/FEE TYPE Duty/tax/fee type, coded	C C	an..3	'AAG' = Harmonised sales tax, Canadian (HST) 'AAH' = Quebec sales tax (QST) 'AAI' = Canadian provincial sales tax (PST) 'EXC' = Excise tax 'FET' = Federal Excise tax 'GST' = Goods and Service Tax 'LAC' = Business License Fee 'LOC' = Local Sale Tax 'OTH' = Other Taxes 'STT' = State/Provincial Sales Tax 'SUR' = Surtax 'VAT' = Value added tax
1131	Code list qualifier	C	an..3	
3055	Code list responsible agency, coded	C	an..3	



Message - Section: Detail
Segment - Group: 34
Segment: TAX
Segment - Name: Duty/tax/fee details
Description: VAT rate for the invoice item. Supersedes the default VAT rate provided in the header section.

DE-No	Description	Status	Format	Description / valid codes
5152	Duty/tax/fee type	C	an..35	
C533	DUTY/TAX/FEE ACCOUNT DETAIL	C		
5289	Duty/tax/fee account identification	M	an..6	
1131	Code list qualifier	C	an..3	
3055	Code list responsible agency, coded	C	an..3	
5286	DUTY/TAX/FEE ASSESSMENT BASIS	C	an..15	
C243	DUTY/TAX/FEE DETAIL	C		
5279	Duty/tax/fee rate identification	C	an..7	
1131	Code list qualifier agency, coded	C	an..3	
3055	Code list responsible agency, coded	C	an..3	
5278	Duty/tax/fee rate	C	an..17	VAT rate in percent (optional with decimal point and decimals)
5273	Duty/tax/fee rate basis identification	C	an..12	
1131	Code list qualifier	C	an..3	
3055	Code list responsible agency, coded	C	an..3	
5305	DUTY/TAX/FEE CATEGORY, CODED	C	an..3	
3446	PARTY TAX IDENTIFICATION NUMBER	C	an..20	

Example:

TAX+1+VAT+++:::0'

4.2.1.12 Segment - Group 35

4.2.1.12.1 Segment NAD – Different address information

Message - Section: Detail

Segment - Group: 35

Segment: NAD

Segment - Name: Name and address

Description: Specify the location, service user and the service provider

DE-No	Description	Status	Format	Description / valid codes
3035	PARTY QUALIFIER	M	an..3	'DP' = service user / location 'SU' = service provider 'XX' = No Heading
C082	PARTY IDENTIFICATION DETAILS	C		
3039	Party id identification	M	an..35	Specification
1131	Code list qualifier	C	an..3	
3055	Code list responsible agency, coded	C	an..3	
C058	NAME AND ADDRESS	C		
3124	Name and address line	M	an..35	Name or address
3124	Name and address line	C	an..35	Name or address
3124	Name and address line	C	an..35	Name or address
3124	Name and address line	C	an..35	Name or address
3124	Name and address line	C	an..35	Name or address
C080	PARTY NAME	C		
3036	Party name	M	an..35	
3036	Party name	C	an..35	
3036	Party name	C	an..35	
3036	Party name	C	an..35	
3036	Party name	C	an..35	
3045	Party name format, coded	C	an..3	
C059	STREET	C		
3042	Street and number/P.O. Box	M	an..35	
3042	Street and number/P.O. Box	C	an..35	
3042	Street and number/P.O. Box	C	an..35	
3164	CITY NAME	C	an..35	
3229	COUNTRY SUB-ENTITY IDENTIFICATION	C	an..9	
1131	Code List Identification Code	C	an..3	'228' = County
3055	Code List Responsible Agency Code	C	an..3	'ZZ' = Mutually



Message - Section: Detail
Segment - Group: 35
Segment: NAD
Segment - Name: Name and address
Description: Specify the location, service user and the service provider

DE-No	Description	Status	Format	Description / valid codes
3228	Country Sub-Element Name	C	an..35	Defined
3251	POSTCODE IDENTIFICATION	C	an..9	
3207	COUNTRY, CODED	C	an..3	

Table:

address qualifier	Level	DE 3035	DE 3039	DE-Group C058
Location	0	DP	Location	Location address
Service user	3	DP	Cost Center	Service user name
Service provider	3	SU	Provider ID	Service provider address
End Point	3	XX	End Point Type	End Point Address

Examples:

NAD+DP+DORTMUND'

NAD+DP+123+JOHN Q'

NAD+SU+01001+TESTCOM'

4.2.1.12.2 Segment - Group 38

4.2.1.12.2.1.1 Segment CTA – Contact information

Message - Section: Detail

Segment - Group: 38

Segment: CTA

Segment - Name: Contact information

Description: Only used for the service provider

DE-No	Description	Status	Format	Description / valid Codes
3139	CONTACT FUNCTION, CODED	C	an..3	'IC' = information contact
C056	DEPARTMENT OR EMPLOYEE DETAILS	C		
3413	Department or employee identification	C	an..17	
3412	Department or employee	C	an..35	

Example:

CTA+IC'



4.2.1.12.2.2 Segment COM – Telephone –/ telefaxnumber / E-Mail

Message - Section: Detail

Segment - Group: 38

Segment: COM

Segment - Name: Communication contact

Description: Phone-, faxnumber or E-Mail from the service provider

DE-No	Description	Status	Format	Description / valid codes
C076	COMMUNICATION CONTACT	M		
3148	Communication number	M	an..512	Phone- or fax number for invoice information
3155	Communication channel qualifier	M	an..3	'TE' = Phone 'FX' = Fax 'EM' = E-Mail

Example:

COM+0223 23-456:TE'

COM+0223 23-123:FX'

COM+CONTACT@PROVIDER.COM:EM'

4.3 Summary Section

4.3.1 Segment UNS – Section control

Message - Section: Summary

Segment - Group:

Segment: UNS

Segment - Name: Section control

Description: Section control

DE-No	Description	Status	Format	Description / valid codes
0081	Section control	M	an...3	'S' = separates Detail and Summary Section

Example:

UNS+S'



4.3.2 Segment - Group 50

4.3.2.1 Segment MOA – Monetary amount

Message - Section: Summary
Segment - Group: 50
Segment: MOA
Segment - Name: Monetary amount
Description: Monetary amount

DE-No	Description	Status	Format	Description / valid codes
C516 5025	MONETARY AMOUNT Monetary amount type qualifier	M M	an..3	'9' = amount payable '77' = Invoice amount (Total Current Charges) '79' = Net current charges prior to discount '124' = tax amount '125' = taxable amount '136' = past due '138' = discount amount
5004	Monetary amount	C	n..18	Amount
6345	Currency, coded	C	an..3	If different to header currency
6343	Currency qualifier	C	an..3	
4405	Status, coded	C	an..3	'9' information

Example:

MOA+79:520'
MOA+138:-20'
MOA+125:500'
MOA+124:80'
MOA+77:580'
MOA+136 :100'
MOA+9:680'

Example with amounts:



Net		520,00
Discount	-20,00	
Taxable Amount		500,00
VAT (16%)		80,00
Gross	580,00	
Past Due	100,00	
Amount payable		680,00

4.3.3 Segment - Group 52

4.3.3.1 Segment TAX – Individual VAT rates of invoice

Message - Section: Summary
 Segment - Group: 52
 Segment: TAX
 Segment - Name: Duty/tax/fee details
 Description: Individual VAT rates of invoice

DE-No	Description	Status	Format	Description / valid codes
5283	DUTY/TAX/FEE FUNCTION QUALIFIER	M	an..3	'3' = VAT
C241 5153	DUTY/TAX/FEE TYPE Duty/tax/fee type, coded	C C	an..3	'VAT' Value added tax for Verizon 'VTP' Value added tax for third parties
1131	Code list qualifier	C	an..3	
3055	Code list responsible agency, coded	C	an..3	
5152	Duty/tax/fee type	C	an..35	
C533 5289	DUTY/TAX/FEE ACCOUNT DETAIL Duty/tax/fee account identification	C M	an..6	
1131 3055	Code list qualifier Code list responsible agency, coded	C C	an..3 an..3	
5286	DUTY/TAX/FEE ASSESSMENT BASIS	C	an..15	
C243 5279	DUTY/TAX/FEE DETAIL Duty/tax/fee rate identification	C C	an..7	VAT rate as percentage (with decimal point and decimals)
1131	Code list qualifier	C	an..3	
3055	Code list responsible agency, coded	C	an..3	
5278	Duty/tax/fee rate	C	an..17	
5273	Duty/tax/fee rate basis identification	C	an..12	
1131	Code list qualifier	C	an..3	
3055	Code list responsible agency, coded	C	an..3	
5305	DUTY/TAX/FEE CATEGORY, CODED	C	an..3	
3446	PARTY TAX IDENTIFICATION	C	an..20	



Message - Section: Summary
Segment - Group: 52
Segment: TAX
Segment - Name: Duty/tax/fee details
Description: Individual VAT rates of invoice

DE-No	Description	Status	Format	Description / valid codes
	NUMBER			
1227	CALCULATION SEQUENCE INDICATOR, CODED	C	an..3	

Examples:

TAX+3+VAT+++:::16'

TAX+3+VTP+++:::19.5'



4.3.3.2 Segment MOA – individual VAT amounts of invoice

Message - Section: Summary
Segment - Group: 52
Segment: MOA
Segment - Name: Monetary amount
Description: Individual VAT amounts of invoice

DE-No	Description	Status	Format	Description / valid codes
C516	MONETARY AMOUNT	M		
5025	Monetary amount type	M	an..3	'124' = tax amount '125' = taxable amount
5004	Monetary amount	C	n..18	Amount
6345	Currency, coded	C	an..3	
6343	Currency qualifier	C	an..3	
4405	Status, coded	C	an..3	

Example:

MOA+125:10'

MOA+124:20.98'

4.3.4 Segment UNT

Message - Section: Summary

Segment - Group:

Segment: UNT

Segment - Name: Message trailer

Description: Last segment in a message

DE-No	Description	Status	Format	Description / valid codes
0074	NUMBER OF SEGMENTS IN THE MESSAGE	M	n..10	Number of segments in the message
0062	MESSAGE REFERENCE NUMBER	M	an..14	Sequence number of the message within the interchange

Example:

UNT+255+2'

4.3.5 Segment UNZ

Message - Section: Summary

Segment - Group:

Segment: UNZ

Segment - Name: Interchange trailer

Description: Last segment in the interchange

DE-No	Description	Status	Format	Description / valid codes
0036	INTERCHANGE CONTROL COUNT	M	n..6	Number of message in the interchange
0020	INTERCHANGE CONTROL REFERENCE	M	an..14	Sequence number of the interchange

Example:

UNZ+4+9'