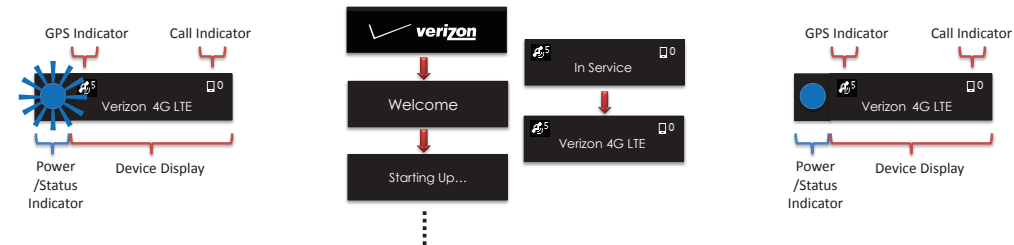


Confirm your 4G LTE Network Extender in Service


When the Network Extender powers on, the Power / Status Indicator LED will be solid blue. During start-up and self-configuration, the LED will blink. After successful start-up, the LED will return to solid blue and the display will show "In Service." Pressing the Button next to the display will show additional information about your Network Extender.



Make a call on your 4G LTE Network Extender

Once the Network Extender is in service, your phone must be within 50 feet horizontally of the unit.

To verify your Verizon phones are connected to the Network Extender:

1. Ensure your Verizon Wireless 4G LTE mobile handset is enabled for Advanced Calling.
2. Dial #48 from your mobile phone and listen for the following confirmation: "You are under 4G LTE Network Extender coverage ..."
3. Some phones may show a home icon. 

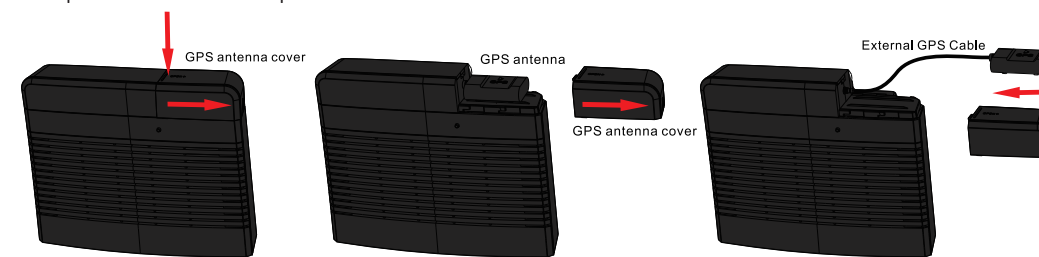
Note: The range of the Network Extender is dependent on the strength of the existing Verizon Wireless network coverage. The use of this unit is recommended for areas where 1 bar or less is observed on your phone.

Troubleshooting

What if my Display still shows "Searching for GPS" after one hour?

If necessary, use the included 23' GPS extension cable, so that the GPS antenna can be placed as close to a window as possible. Follow the steps below to attach the GPS extension cable.

1. Firmly press down on and slide the protective cover as shown to expose the rectangular GPS antenna.
2. Pull the GPS antenna out and attach GPS extension cable and reattach GPS antenna in line.
3. Replace the GPS cover and place the GPS antenna in a new location close to a window.



What if my display still shows 'Connecting to the Verizon Network' after one hour?

You may have to change the settings on your router. Please refer to the Troubleshooting section of the User Guide before calling Verizon or go to www.verizonwireless.com/support/network-extender-router-configuration/

For More Information

- For the latest documentation, additional troubleshooting steps, or to learn more about advanced settings and the device's web interface, find the downloadable User Guide at www.verizonwireless.com/support/4g-lte-network-extender/.
- Or call customer support toll free at 800-922-0204.



Verizon 4G LTE Network Extender Quick Start Guide



SLS-BU103

Version VSR 1.0

EP96-04526A Revision 4



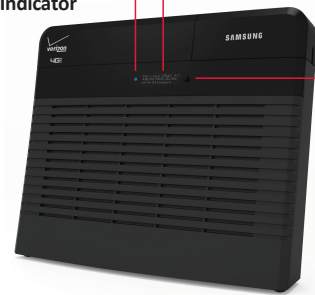
Verizon Wireless 4G LTE Network Extender

Thank you for purchasing a Network Extender to provide enhanced coverage for your Verizon Wireless devices. Use this guide to help you set up your Network Extender for first use, learn how to connect to it, and verify that you are under Network Extender coverage.

Get to know your device

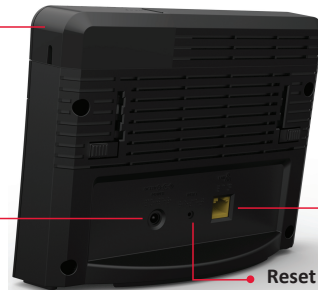
Power/Status Indicator

Display



GPS Antenna

Display Button



12V DC Power Input

LAN Port

Reset Button

For advanced use only. Depress for 10 seconds to reset to factory default. Please see User Guide.

In the Box



Before You Begin

Go to www.verizonwireless.com/support/4g-lte-network-extender/ and print the User Guide.

4G LTE Network Extender Requirements

- Internet Access: High Speed wired broadband with minimum download speed of 10Mbps and Upload speed of 5Mbps, 20 Mbps Down and 10 Mbps Up or higher is Recommended.
 - Home satellite broadband access is not supported.
- A Router: The Network Extender must be connected to an available LAN port on a router or modem with always-on Internet access.
- GPS signal: The Network Extender requires a continuous GPS signal from the provided GPS antenna.

Placement

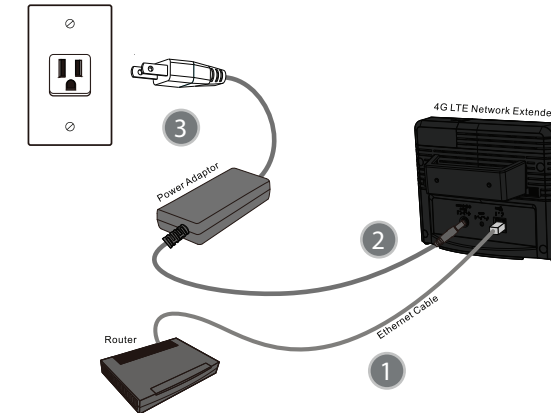
- Identify a location near a window for the Network Extender where a strong GPS signal can be acquired.
 - A GPS signal is necessary for the Network Extender to work properly and to provide your location in the event of an emergency and 911 is dialed.
- Place your Network Extender at least 10 feet away from products that generate electromagnetic radiation (e.g., microwave oven).
- Identify a power source for your Network Extender.
- The 4G LTE Network Extender can be installed vertically, horizontally or mounted to a wall.
 - Optional wall mount brackets sold separately.



Setup Instructions

Connect your 4G LTE Network Extender to the Internet

- Plug one end of the provided Ethernet cable into an available 'LAN' port on your router and the other end to the 'LAN' port on your Network Extender.
- Plug the power supply connector into the DC 12V power port located at the rear of the Network Extender (2).
- Insert one end of the power cord into the power supply and then plug the other end into an available outlet (3).



Automatic startup and self-configuration will begin on power up and will take between 30 - 60 minutes the first time the Network Extender is powered on!



For general safety and precautions, see Product Safety and Warranty Manual