

Installation instructions

fios^v
by verizon



Here are the items you may need for installation.

Fios equipment

Router + power cord
(You will receive one of the two router models shown below.)



Video Media Server + power cord



Media Client + power cord



Fios TV remote



Cables and connectors

(You may not need all items shown for your home setup.)

Ethernet cables (6')



Composite cables



Cable barrel connector
(optional if wall outlet is not available)



HDMI cable



Coax cables



2-way splitter



Special order

Digital Adapter



CableCARD

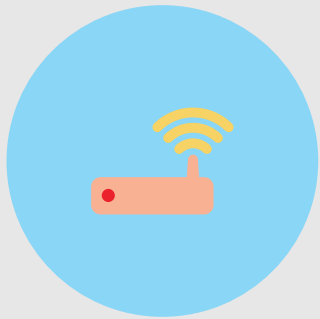


Wait...

Before you start, unhook all of the existing TV equipment in your home.

A. Unplug all third-party TV streaming devices.

B. Already have Verizon Internet and not changing your router? Then skip to Step 2.



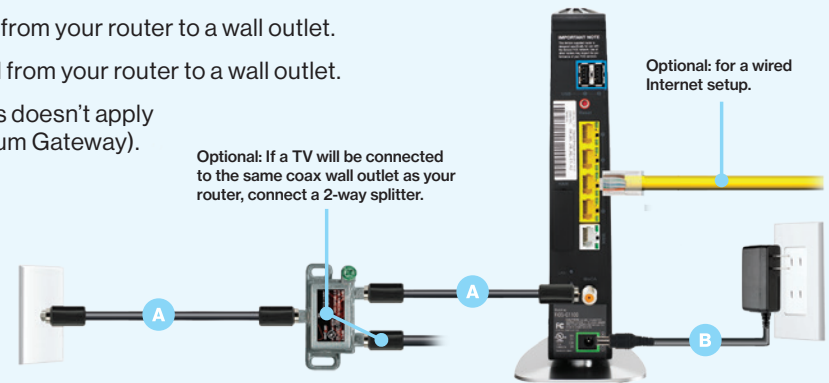
Step 1

First, let's set up your Fios router.

Note: If you're using an existing router, skip to Step 2.

Step 1A: Make the connections

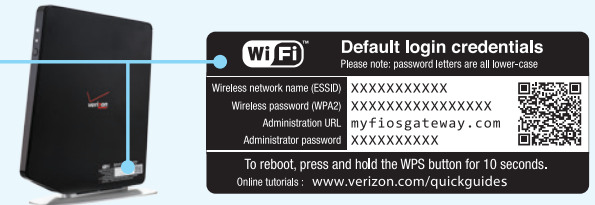
- A. Connect the coax cable from your router to a wall outlet.
- B. Connect the power cord from your router to a wall outlet.
- C. Turn your router ON (this doesn't apply if you have a Fios Quantum Gateway).



Your router is activated when the lights turn green/white, which may take up to 6 minutes.

Step 1B: Go wireless

- Check the label on your router for your Wireless network name and Wireless password.
- On your computer or smartphone, choose your wireless network name when it pops up.
- When asked, enter your wireless password exactly as it is on your router label.



Step 1C: Let's go surfing

- To verify your service is up and running, open an Internet browser and go to activatemyfios.verizon.net.

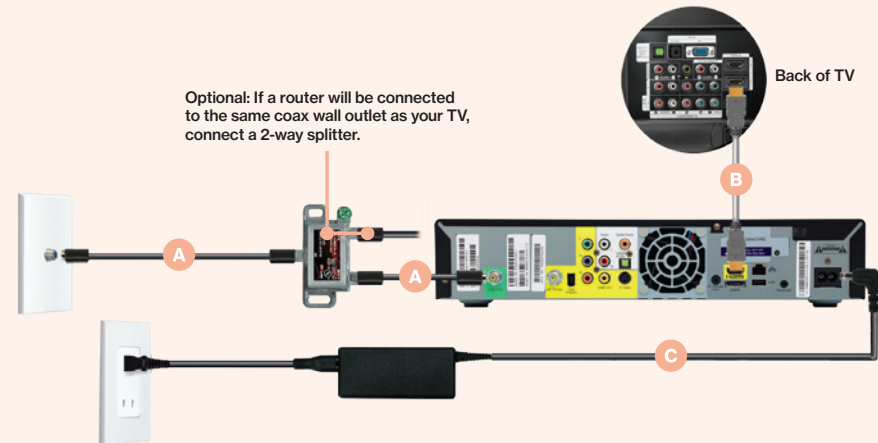


Step 2

Now, let's connect your Video Media Server – the Fios TV hub.

Step 2A: Make the connections

- A. Connect the coax cable from your Video Media Server to a wall outlet.
- B. Connect the HDMI cable from your Video Media Server to your TV.
- C. Connect the power cord from your Video Media Server to a wall outlet.



Step 2B: Activate away

Turn on your Video Media Server and TV. Using your Fios TV remote, follow the on-screen instructions.





Step 3

Install your Media Client next to expand your home viewing experience.

Step 3A: Make the connections using HDMI cable (preferred)

- A. Connect the coax cable from your Media Client to a wall outlet.
- B. Connect the HDMI cable from your Media Client to your TV.
- C. Connect the power cord from your Media Client to a wall outlet.



Alternate option: Make the connections using composite cables

TV not HDMI-compatible? No problem, connect the composite cables instead, making sure to match the cable colors to the back of the Media Client and TV.



Step 3B: Activate away

Turn on your Media Client and TV. Using your Fios TV remote, follow the on-screen instructions.





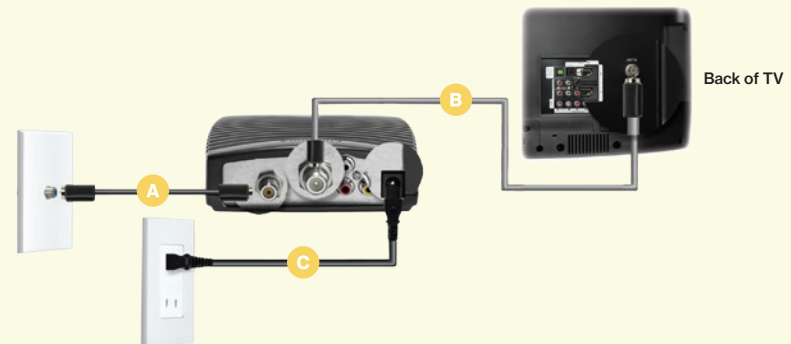
Step 4

If special ordered, install your Digital Adapter and/or CableCARD.

Digital Adapter

Make the connections

- Connect the coax cable from your Digital Adapter to a wall outlet.
- Connect the coax cable from your Digital Adapter to your TV.
- Connect the power cord from your Digital Adapter to a wall outlet.



Activate away

- Turn on the Digital Adapter by pressing the set-top box button on the Fios TV remote. Then turn on your TV and tune to channel 3 using the remote control that came with your TV.
- To complete activation, call 1.855.372.2181 and provide the Digital Adapter serial number.

CableCARD

Get hooked up

Read through any instructions for your CableCARD-ready device and complete any set up.

Activate away

- When the CableCARD is inserted, follow the on-screen instructions.
- When prompted, enter the activation code on your Verizon customer receipt.
- Select which method of activation you prefer:
Online at verizon.com/fios/tv/selfinstall or by phone at 1.888.897.7499.





Need help?

Your satisfaction is
important to us.

**Visit activatemyfios.verizon.net to
access the Self-Install Wizard.**



1.800.Verizon (1.800.837.4966)

NVMSFIG0216
© 2016 Verizon. All rights reserved.



11320316

Fios VMS NEW SELF-INSTALL
02-16