

Fios TV One setup instructions

Setup options

My Fios app



Use the My Fios app for
easy setup instructions.

Paper instructions



Don't have internet access?
Use these setup instructions.

verizon^v



Wait... disconnecting equipment is important.

Before you begin, everything must be disconnected from all TVs throughout your home such as:

- set-top boxes
- TV equipment (CableCARDS, Digital Adapters, etc.)
- gaming systems
- third-party streaming devices (Roku, Google Chromecast, etc.)
- DVD and Blu-ray players

If keeping an existing Verizon router, skip to Step 2.

Step 1: Fios Router

Step 1A: Make the connections

- A. Connect the coax cable from the coax port on your router to a coax outlet. (Required for Fios TV*)
- B. Connect the power cord to your router then to an electrical outlet.
- C. Router will take up to 10 minutes to update completely. Move to the next step when the front light is solid white.

Optional: use the provided splitter to connect a Fios TV One and router to the same coax outlet.



Troubleshooting

If the light is not solid white, visit [verizon.com/routersupport](https://www.verizon.com/routersupport)

*Separate subscription required; not available in all areas.

Step 1: Fios Router (continued)

Step 1B: Wired or Wi-Fi? Your choice.

Wi-Fi

- Get the Wi-Fi name and password off the label on your router.
- On your device, choose your Wi-Fi name when it appears.
- Enter your Wi-Fi password exactly as it is on your router label.



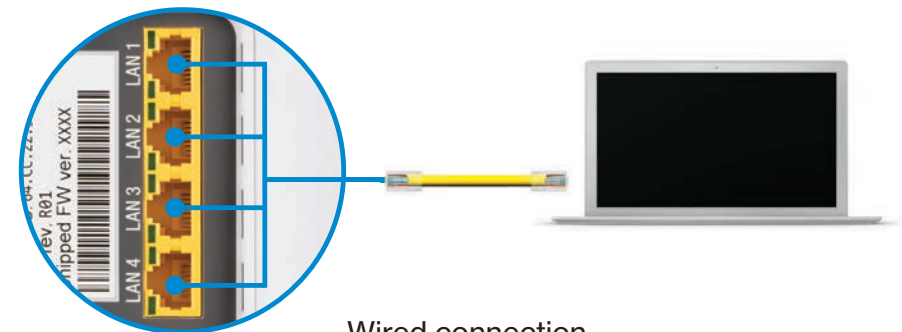
Router label

Wi-Fi Network

The Fios Router supports Self-Organizing Network (SON) and allows your devices to move seamlessly between 2.4 GHz and 5 GHz Wi-Fi signals, connecting devices to the closest access point, and optimizing your Wi-Fi connection.

Wired

- Connect the Ethernet cable to any yellow LAN port on your router.
- Connect the other end to your computer.



Wired connection

Step 1C: Complete activation

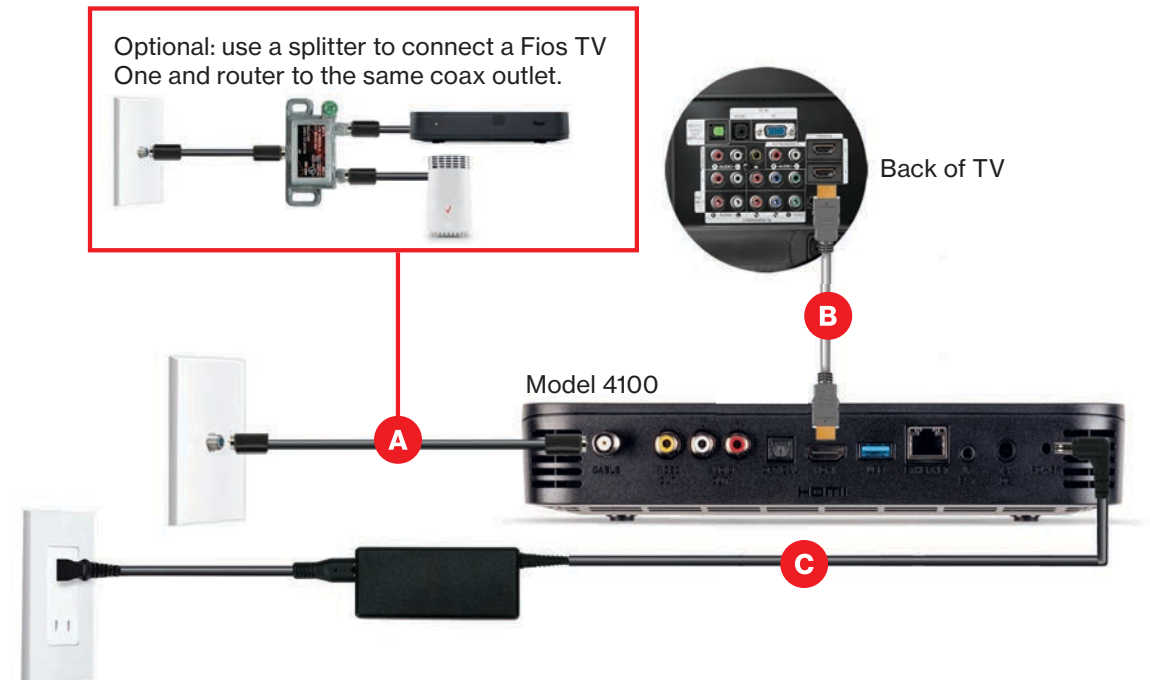
Activate your service by opening a web browser on your computer and following the prompts.

Note: If you ordered a Fios Extender, set it up now using the instructions in the box.

Step 2: Fios TV One

Step 2A: Make the connections

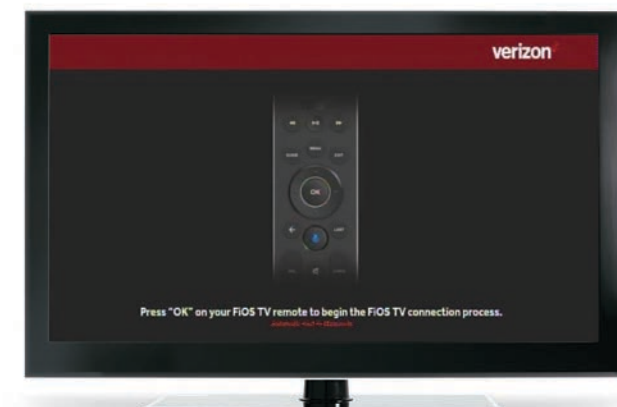
- A. Connect the coax cable from the Fios TV One to a coax outlet.
- B. Connect the HDMI cable* from the Fios TV One to your TV.
- C. Connect the power cord from the Fios TV One to an electrical outlet.



Step 2B: Complete activation and remote setup

Turn on your television and Fios TV One. Using the Fios TV Voice Remote, follow the on-screen instructions to complete activation and remote setup.

Note: If you have any issues with the Fios TV Voice Remote functioning properly after setup is complete, you may need to pair it manually by going to [Menu](#) > [Settings](#) > [Voice Control](#) > [Fios Voice Remote](#) > [Program Voice Remote](#) > [Manual Setup](#) and following the prompts.



*The HDMI cables included with your equipment are 4K compatible.

Step 3: Fios TV One Mini

Step 3A: Make the connections

A. Connect to Fios TV via a Wired or a Wi-Fi connection

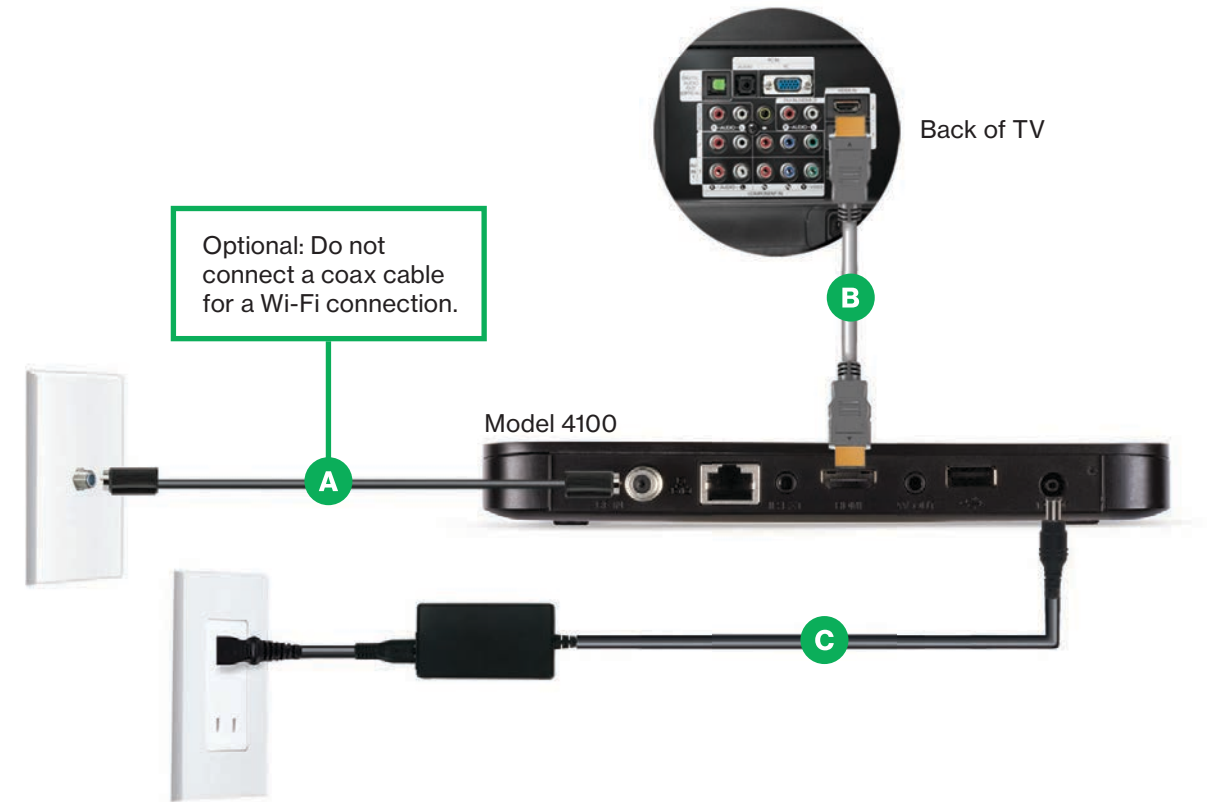
Wired: Connect the coax cable from your Fios TV One Mini to a coax outlet.

Wi-Fi: Do NOT connect the coax cable; your Fios Wi-Fi will sync automatically.

B. Connect the HDMI cable* from your Fios TV One Mini to your TV.

Note: If your TV is not HDMI compatible, use composite cables and the provided adapter.

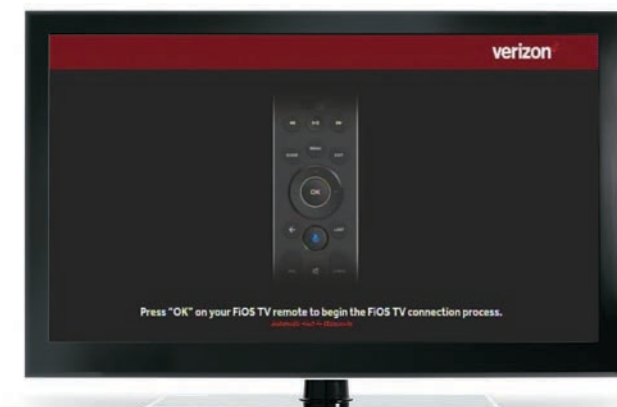
C. Connect the power cord from your Fios TV One Mini to an electrical outlet.



Step 3B: Complete activation and remote setup

Turn on your television and Fios TV One Mini. Using the Fios TV Voice Remote, follow the on-screen instructions to complete activation and remote setup.

Note: If you have any issues with the Fios TV Voice Remote functioning properly after setup is complete, you may need to pair it manually by going to [Menu](#) > [Settings](#) > [Voice Control](#) > [Fios Voice Remote](#) > [Program Voice Remote](#) > [Manual Setup](#) and following the prompts.



*The HDMI cables included with your equipment are 4K compatible.

Step 4: Accessories (if ordered)

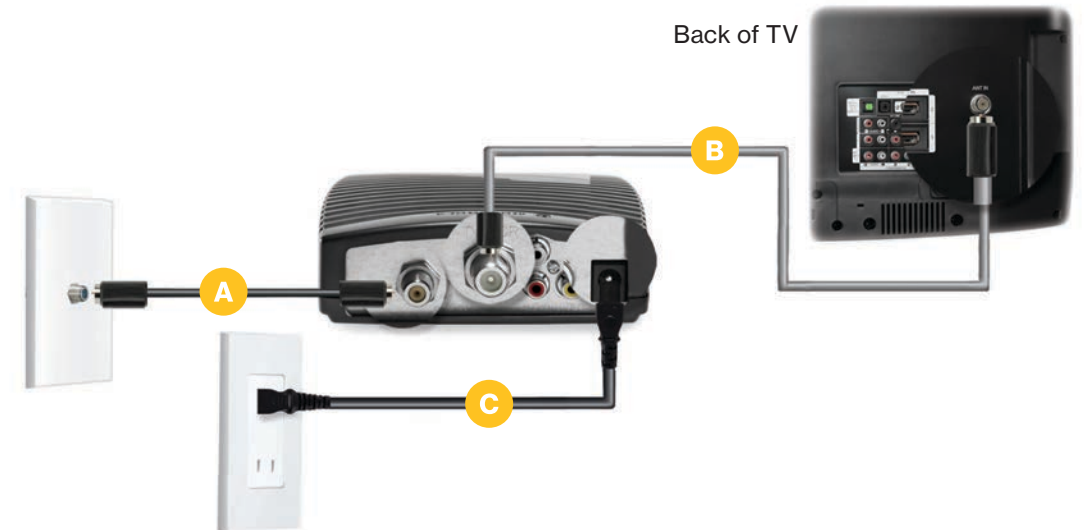
Digital Adapter

Make the connections

- A. Connect the coax cable from the Digital Adapter to a coax outlet.
- B. Connect the coax cable from the Digital Adapter to your TV.
- C. Connect the power cord from the Digital Adapter to an electrical outlet.

Complete activation

- D. Turn the Digital Adapter on using the Fios TV remote; then turn on your TV using the remote control that came with your TV and tune to channel 3.
- E. Activate online at verizon.com/fiostv/selfinstall or by phone at 855.372.2181.



If you ordered additional Fios accessories, follow the instructions included with the equipment.

Fios TV Voice Remote

Give voice control a try.

After activation, use the voice feature on your Fios TV Voice Remote to quickly and easily control your TV. Hold the remote about 12" from your face and press the mic button. Speak normally as you say commands such as "Tune to CNN" or "Show me comedy movies."

For more information about Fios TV Voice Remote features, visit [verizon.com/voiceremote](https://www.verizon.com/voiceremote)



Need help?

For setup help, answers to common Fios questions and more:



Use the My Fios app



Go online to [verizon.com/support](https://www.verizon.com/support)



11361578

SI COAX FIOS TV ONE
03-21